

# TSR

## THE SOUTHAMPTON REVIEW

VOLUME VI No. 1  SPRING 2012



*work by* PHEBE SHIH CHAO • GAHAN WILSON • RACHEL PASTAN  
ASHLEIGH MARIE SMITH • GENEVIEVE CRANE • CHRISTOPHER CASCIO  
ROBERT WRIGLEY • DANIEL DE SIMONE • LIZA DONNELLY • CARL PHILLIPS  
ANNE BABSON • JANICE MAFFEI • MICHAEL MASLIN • JENNIFER BROOKE  
DAVE ENGELDRUM • DANIELLE BERG • WALTER BERNARD • JENNIFER GREENSTEIN  
BOB MORRIS • CHRISTOPHER BYRD • STEVE MILLER • ANNE PIERSON WIESE  
BARRY MCCALLION • M.E. BUNZEL • MAGGIE BLOOMFIELD • TRAVIS RAVE  
EMMA WALTON HAMILTON • J. MALCOLM GARCIA • MATTHEW MIRANDA  
STAR BLACK • KATHLEEN GOLDHIRSCH • SYMA GERARD • JESSICA CIRA  
BEN PURKERT • HECTOR LEONARDI • CATHY ZIMMERMAN • MARTHA COOLEY  
KENNETH KOCH • TULA CAHOON HOLMES • JANET KAPLAN • BILLY COLLINS  
*lines I wish I'd delivered* ROGER ROSENBLATT • JULES FEIFFER • BYRON DOBELL  
JULIE SHEEHAN • ARNOLD ROTH • MELISSA BANK • ROBERT REEVES

# PORTFOLIO

---



## *X-Ray Visionary*

by STEVE MILLER

STEVE MILLER'S X-RAY PROJECT, IMAGES OF ANIMALS FROM THE AMAZON, is the natural extension of his "Health of the Planet" series. His three-year search for a Brazilian hospital that would allow him to X-ray plants and animals necessitated his learning Portuguese. Working with the animals at the *Instituto Guildi* in Belem, a town located at the gateway to the Amazon, Miller has created a powerful series of photographic images that allow the viewer a brief glimpse into the evolution of life itself.

-TCH

# PORTFOLIO



FISH BOX, 2011  
*Carbon on cotton print*  
29.83 x 24 inches

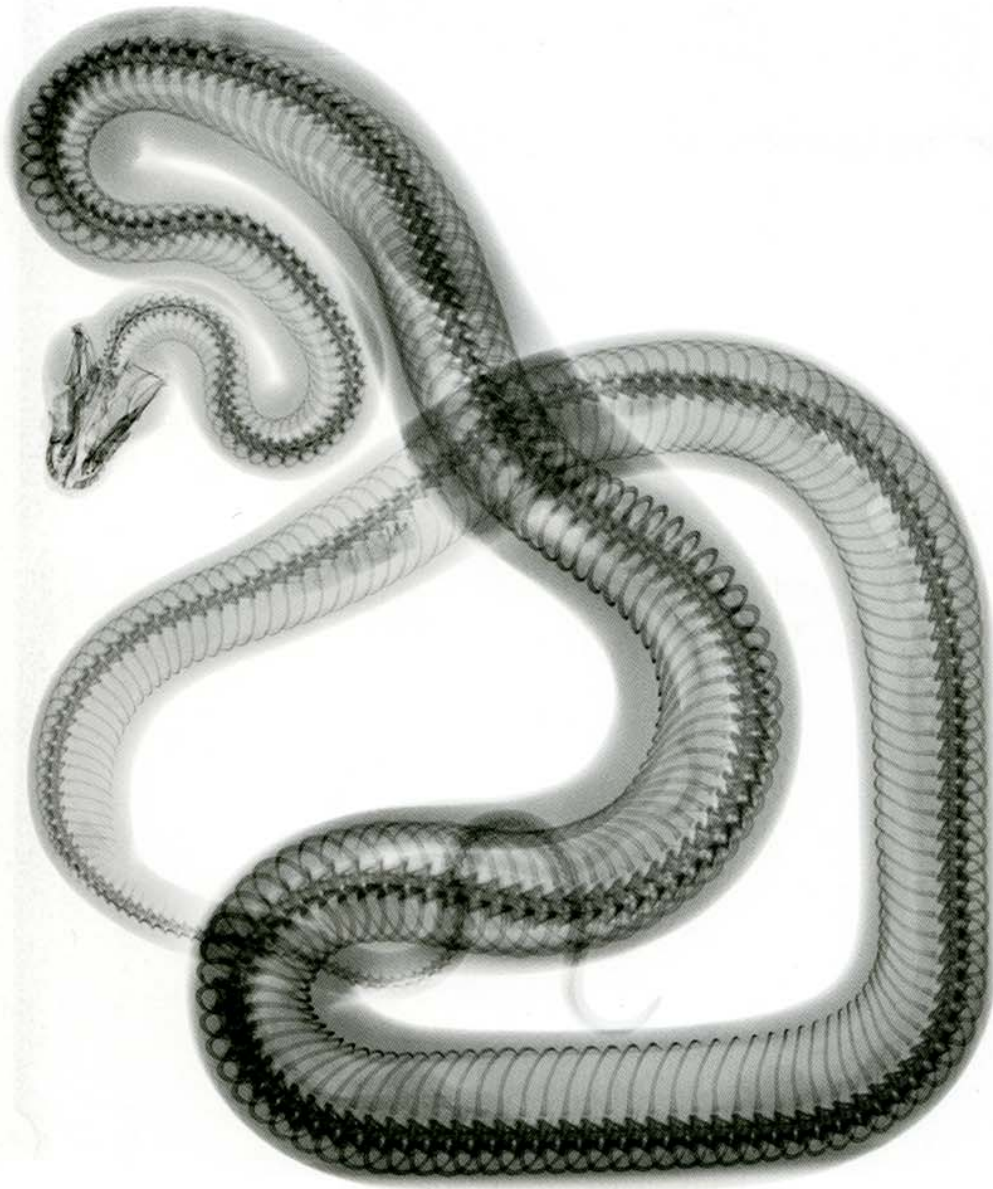
Steve Miller



FISH CIRCLE, 2011  
Carbon on cotton print  
29.83 x 24 inches



SLOTH PIETA, 2011  
*Carbon on cotton print*  
26 x 24 inches



*Serpent, 2010*  
*Carbon on cotton print*  
*28.5 x 24 inches*



TURTLE EGGS  
*Carbon on cotton print*  
24 x 24 inches